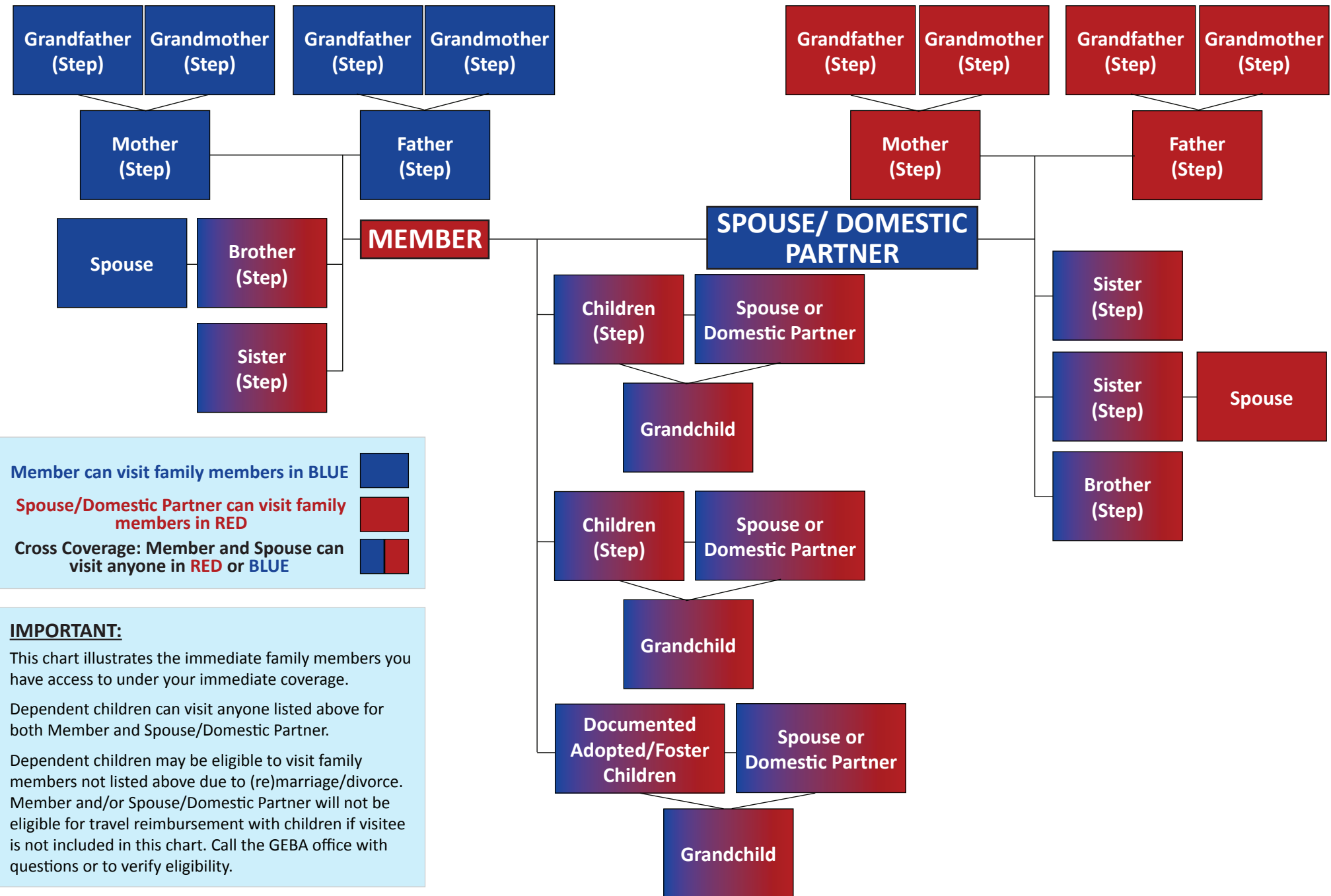


Emergency Travel Plan Family Inclusion Chart

G \equiv B A



Member can visit family members in BLUE

Spouse/Domestic Partner can visit family members in RED

Cross Coverage: Member and Spouse can visit anyone in RED or BLUE

IMPORTANT:
 This chart illustrates the immediate family members you have access to under your immediate coverage.
 Dependent children can visit anyone listed above for both Member and Spouse/Domestic Partner.
 Dependent children may be eligible to visit family members not listed above due to (re)marriage/divorce. Member and/or Spouse/Domestic Partner will not be eligible for travel reimbursement with children if visitee is not included in this chart. Call the GEBA office with questions or to verify eligibility.